

GIZ GENDER COMPETITION 2024: GIZ INDIA APPLICATION FROM SUID CLUSTER (CATEGORY: GE2)

SUSTAINABLE URBAN MOBILITY- AIR QUALITY, CLIMATE ACTION AND ACCESSIBILITY (SUM-ACA)

Context and Background

India has amongst the lowest female labor force participation rates (FLFPR) globally, with 18.5% as the urban FLFPR. The Census (2011) data for cities (tier I, II, and III) shows that women form only 22% of all people travelling for work across India. A gendered comparison of the data revealed that women and girls comprised only 22% of all people travelling for work and yet 84% of their trips were by public, intermediate public, and non-motorized modes of transport. Buses and walking are amongst the most used modes of public transport by women. On average in India, 45.4% women walked to work compared to 27.4% men, and 22.0% women took the bus, vs. 13.7% men. On the other hand, 28.6% men took private motorized transport, such as their own vehicles, vs. 15.8% women. With a focus of gender equality and women's empowerment, various policies and schemes at national and state level have also been initiated. Few of which include, formation of National Commission for Women, 1990; National Policy for Women, 2001; Support to Training and Employment Program for Women (STEP); and formation of Nirbhaya Fund.

However, transport is often identified as a barrier to women's participation in labor force. In addition to domestic responsibilities and cultural gender norms. A survey conducted in Mumbai in 2019 revealed that 31% of surveyed women reported commuting as a barrier to working. (Closing the gap: gender, transport and employment in Mumbai). A survey conducted in two cities of Kerala revealed that around 93% of the surveyed women restricted their mobility due to fear of harassment. Barriers in accessing public transport, lack of safety during travel, and social norms restricting mobility, severely limit women's work, education, and life choices.

GENDER TRANSFORMATIVE APPROACHES IN URBAN MOBILITY: A FEMINIST MOVE

GIZ's project, Integrated Sustainable Transport Systems for Smart Cities (SMART-SUT), implemented between 2017-2022, worked towards planning and implementation of efficient and sustainable urban transport systems in its partner cities. Our current project, SUM-ACA is a follow-on project on SMART-SUT, (2022-2025). The BMZ supported GIZ INDIA SMART-SUT project was a GG1 project, multiple initiatives focusing on Germany's feminist development policy's 3Rs- Rights, Resources and Representation were undertaken. To understand the issue of gender and mobility, we undertook a study in Kerala, which comprised of:

1. Focused group discussions and perception survey of around 1400 women in 3 cities of Kerala
2. Institutional assessment to understand the roles and responsibilities and challenges faced
3. Infrastructure assessment

Based on the study, 5 reforms were framed aimed towards gender transformation in urban mobility. (Study can be accessed here: [GenderandMobility.pdf \(urban-industrial.in\)](#))

Nodal agency for gender mainstreaming in urban transport

Gender disaggregated data collection

Gender inclusion at different levels

Developing gender responsive infrastructure

Training, capacity building and Awareness program

Considering these reforms, few notable initiatives of SMART-SUT are as below:

Mo-E-ride #RideWithPride: Leading the electric mobility transition through gender inclusion: With an aim to create an ecosystem that generates livelihoods for Trans*persons (known as The Third Gender in India) and provide safe and clean last mile connectivity to all, Capital Region Urban Transport (CRUT), in this one-of-a-kind initiative, included 120 women and transgender persons as electric-rickshaw drivers. GIZ India SMART-SUT supported CRUT in identification of the Trans*persons, women and people affected by HIV/AIDS, and trained them towards driving of e-rickshaws, operations and maintenance, traffic rules, road safety and gender sensitization. Some interesting **social media campaigns and videos** are shared below:

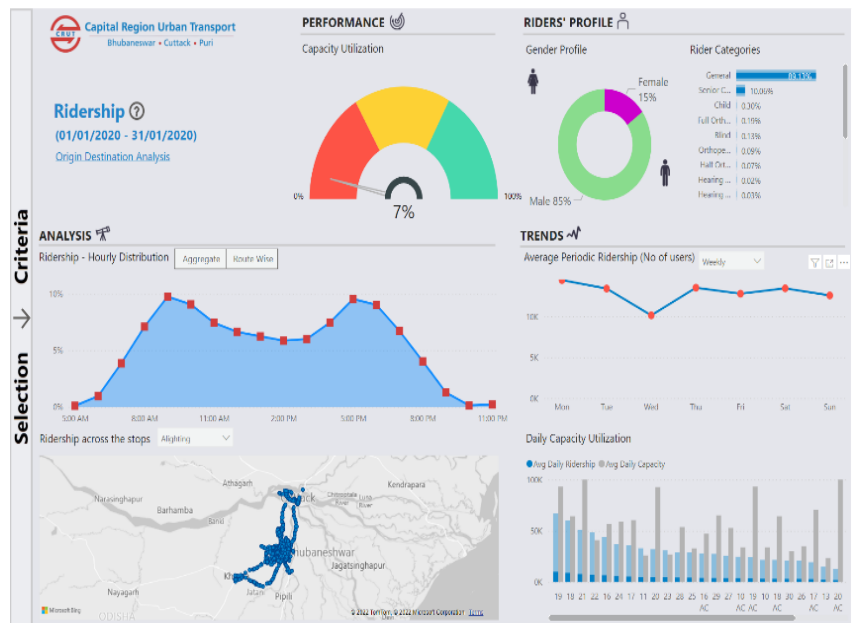


(1) [Rap video on #MoERide! #RideWithPride](#) in the [#sustainable #ERickshaws in the city](#).

(2) **E-Rickshaws Powered by Women and Trans*persons:** From passenger management to group activities, emergency handling & gender sensitization, here's a [glimpse into the rigorous training](#) behind the scenes.

Gender disaggregated data collection: SMART-SUT supported CRUT in initiating gender-based ticketing. The Electronic Ticketing Machines (ETMs) were programmed allowing the conductor to classify the tickets based on gender disaggregated ridership.

Each ticket transaction through these ETMs records the boarding stage, alighting stage, time and date of issue. Allowing the officials to analyze parameters such as total female ridership, trip wise female ridership, route wise female ridership, female boarding alighting. This data is helping CRUT take informed decision regarding initiating women only bus/ reserved female capacity on specific routes, deploying female conductors, scheduling early morning or late-night bus based on women ridership, deploying patrols and developing bus stop amenities for women. A dashboard with certain identified parameters has also been developed for CRUT by GIZ India SMART-SUT, which showcases certain identified key performance indicators. With the dashboard, one can easily get data on the female ridership, route-wise female ridership, female boarding and alighting pattern.



The Results Based Monitoring system of the project encompasses gender sensitive approaches in data collection, analysis and ensures it is in line with RbM requirements and impact monitoring.

GENDER TRANSFORMATIVE INITIATIVES PLANNED UNDER SUM-ACA

Under the SUM-ACA project (GG2 project) plan to upscale the successes achieved in our previous project, and work towards institutionalizing the approaches identified towards gender equality and safety. This project focusses not only on **gender inclusion** and safety but also inclusion of **Persons with Disability (PWDs)**.

SCALING UP: REPLICATING WOMEN DRIVERS FOR ELECTRIC AUTOS/RICKSHAWS IN OTHER CITIES

SUM-ACA has recently initiated Training of Trainers for electric-rickshaw driving in Bengaluru (Karnataka) and Kochi (Kerala) to train women to drive electric-rickshaws and work effectively towards sensitizing male drivers. In Karnataka, SUM-ACA is working with Auto-Rickshaw Driver's Union (ARDU), Aadarsh Auto Driver Association and Directorate of Urban Land Transport (DULT)-coordinating agency for urban transport in the state, towards identification of trainers for the initiative. DULT will be responsible for bringing in local and para-statal agencies, to ensure sustainability and continuity of the program. A total of 1.3 lakh auto-drivers are registered in Bengaluru, associated with various unions. 30,000 drivers are registered with ARDU and ~15,000 with Adarsh auto union. Both the unions are working to increase women auto-drivers in the cities, by training them to drive e-autos. The association ensures that all drivers registered will be trained. **Read more [Bengaluru: Last-mile auto app Metro Mitra Launch](#).**

Further, the easy-to-use training material will support women to take up jobs as electric rickshaws drivers. The aim is to increase in the number of women drivers and provide gender sensitization training to all drivers with the purpose of addressing power structures thereby enabling equal opportunity for all personnel, specifically women.

In Kerala, KMRL has procured and operating 75 electric autos, and have requested funding support from SUM-ACA for 25 e-autos- all of which will be driven by women. Towards this, SUM-ACA is also collaborating with SCMS college of Engineering & Technology, which will be responsible for complete training of women in driving e-autos. The training would include operation and maintenance, traffic rules and also be specific towards gender sensitization. The institutions will identify trainers, to whom the ToTs (Training Of Trainers) will be provided. The trainers will be responsible to train the identified beneficiaries. The planning of ToTs is already underway and is expected to be completed by February 2024.

Institutionalizing Gender disaggregated data towards creating Gender sensitive urban mobility systems in cities.

The Ministry of Urban Development, now Ministry of Housing and Urban Affairs (MoHUA) in 2008, prepared and issued toolkit for preparation of a Comprehensive Mobility Plan (CMP) for cities, which

provides a vision statement for the urban transport system for a city, covering aspects of public transport, non-motorized transport, and land use transport integration (updated in 2014). GIZ India SUM-ACA is supporting MoHUA to update the toolkit, including a framework for considering electric mobility and gender inclusion in the mobility strategy. More than 50 cities in India have prepared CMP in India using the toolkit, and most of the cities will be updating their CMP soon. Collection and analysis of gender disaggregated data will support the cities to take decisions towards planning and designing of gender sensitive services and transport infrastructure.

This is revolutionary as the use of gender disaggregated data to influence Transport and Urban planning and design has never been taken into consideration, until now. Disaggregated data collection and analysis will lead to parameters such as 'mode share', 'cost on transport', major points of attractions and generators, 'non-motorized trips', 'vehicle ownership'. These parameters will be used to assess the responsiveness of the current public transport systems towards the requirements of all genders (including Trans*Persons); improve accessibility, safety, affordability of the public transport system, using the data collected and analyzed. Prevention of all kinds of violence and sexual harassment and perception towards safety are to be included in the CMP surveys. The work on updating the toolkit has already been initiated along with the Indian Partner – MoHUA. The activity is expected to be completed by August 2024 post which, the Indian Ministry will also notify and issue the updated toolkit.

GENDER RESPONSIVE INFRASTRUCTURE DEVELOPMENT

SUM-ACA is supporting Rajkot (city in Gujarat) towards developing regulations for street development. These regulations will be prepared taking into consideration the safety of women. Provisions of streetlights at required intervals, vendors and boundary, footpaths providing accessibility, safe bus stop designs, boundary walls supporting eyes on street with helpline numbers displayed at different location shall be incorporated in the regulations. The regulations are expected to be framed by March 2024, after which, the process of notifying the regulations by the Rajkot Municipal Corporation will be initiated.

GENDER TRANSFORMATIVE APPROACH: DIGITAL TOOLS FOR TRAVEL ACCESSIBILITY FOR THE VISUALLY IMPAIRED (PWD)

The Raised Line Foundation- a not-for-profit company, incubated out of IIT-Delhi, has developed '**On Board**', which is a device assisting persons with visual impairment to board public buses. It helps the visually impaired by a) identifying the route number, and b) identify location of bus door using audio cue generated by speaker on bus. **GIZ India SUM-ACA along with the GIZ Green Urban Mobility-Living Lab project** is in the process of installing 200 Onboard devices on city buses in the partner city of Mysore- for which preliminary studies to identify routes are being undertaken.

KNOWLEDGE SHARING: GENDER TRANSFORMATIVE APPROACHES IN URBAN MOBILITY

Knowledge sharing workshop, on the approaches towards gender transformation in urban mobility, with supporting best practices was organized by SUM-ACA in collaboration with World Bank in July 2023. The workshop comprised of 50 participants from 10 local and para-statal agencies of Karnataka in the mobility sector. Consultation workshop on 'Inclusive Mobility' with PWDs and sector experts undertaken to understand the challenges faced by PWDs in accessing different transportation systems and explore possible solutions. ([\(30\) Post | LinkedIn](#))